

**Exclusively for you**

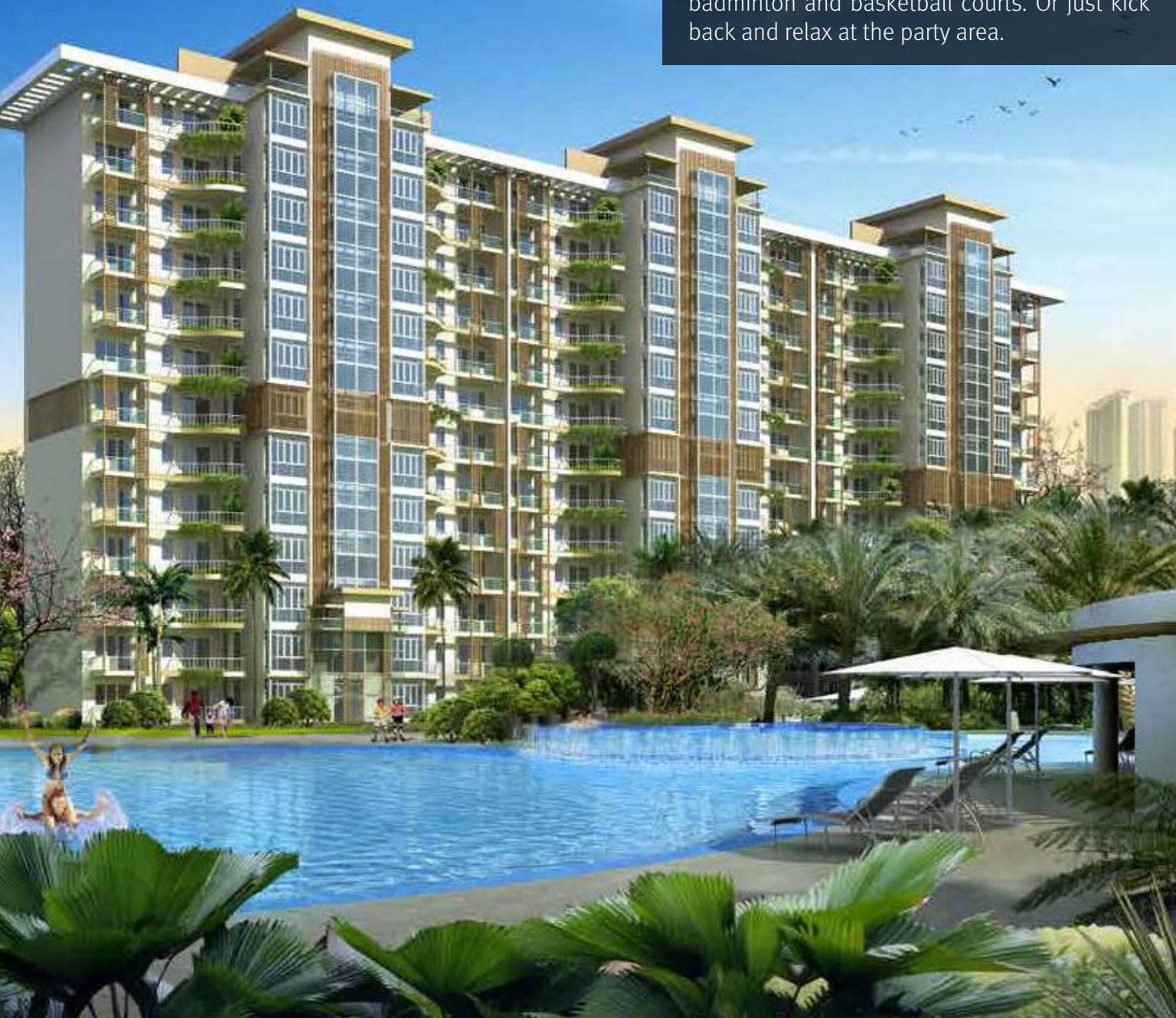
**Palm Terraces Select**  
Sector 65, Gurugram

**4 BHK Apartments**  
**5 BHK Duplex Penthouses**

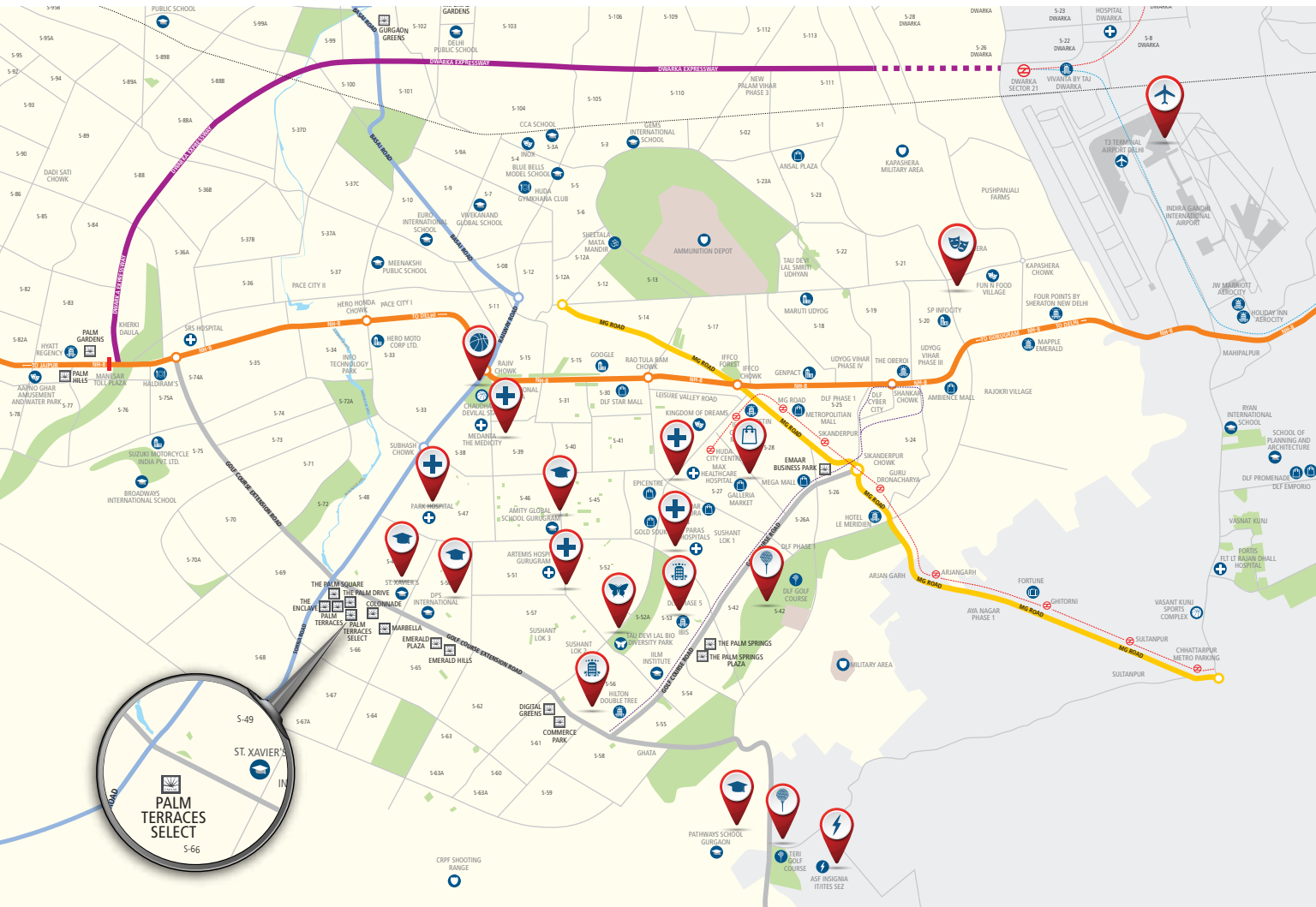
Tower Number 7, 8, 9, 10, 11 and 12

## Grand View

Palm Terraces Select invites you to the next level of luxury living. Expansive apartments, give you abundant space and privacy to celebrate every moment. Enjoy an array of world class amenities, amidst luxuriant greens that refresh every sense. Indulge yourself in the Island clubhouse, with its signature resort-style heated pool. Polish your skills at the bowling alley. Pursue your passion at the tennis, badminton and basketball courts. Or just kick back and relax at the party area.



# Location



Map not to scale

- On Golf Course extn. road, well connected to NH-8 and IGI (T3) airport
- Metroline coming up in the vicinity
- Close proximity to emerging suburban Business District
- Thriving neighbourhood with schools and hospital nearby

## Highlights

- Clubhouse with heated pool
- Sports facilities with tennis, badminton and basketball courts
- Power back up



# Master Plan



## Legend

- 1) Main Entrance
- 2) Central Greens
- 3) Club House
- 4) Swimming Pool
- 5) Joggers Track
- 6) Joggers Park
- 7) Tennis Court
- 8) Badminton Court
- 9) Basket Ball
- 10) Basement Ramp
- 11) Green Belt

- Tower 1 to 4  
(G+9 with Terrace Garden)
- Tower 5, 6, 7, 11 & 12  
(G +11 with Pent House)
- Tower 8, 9 & 10  
(G +12 with Pent House)

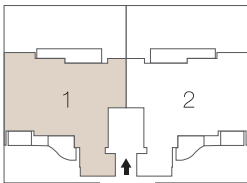
# Floor Plan

## GROUND FLOOR PLAN

Tower 1 to 4

Size: 2410 sq. ft. (224 sq. mtr.)

4 Bedroom, 4 Bathroom, Utility, S.Room, Front & Rear Lawn and Elevators



In the interest of maintaining high standards, all floor plans, layout plans, areas, dimensions and specifications mentioned are indicative and are subject to change as decided by the company or by any competent authority. Soft furnishing, cupboards, kitchen cabinets, furniture and gadgets are not part of the offering. 1 sq. mtr. = 1.196 sq. yds. & 1 sq. mtr. = 10.764 sq. ft. All dimensions are from Masonry to Masonry.

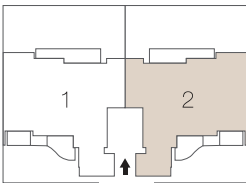
# Floor Plan

## GROUND FLOOR PLAN

Tower 1 to 4

Size: 2410 sq. ft. (224 sq. mtr.)

4 Bedroom, 4 Bathroom, Utility, S.Room, Front & Rear Lawn and Elevators



In the interest of maintaining high standards, all floor plans, layout plans, areas, dimensions and specifications mentioned are indicative and are subject to change as decided by the company or by any competent authority. Soft furnishing, cupboards, kitchen cabinets, furniture and gadgets are not part of the offering. 1 sq. mtr. = 1.196 sq. yds. & 1 sq. mtr. = 10.764 sq. ft. All dimensions are from Masonry to Masonry.

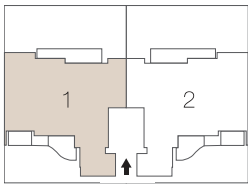
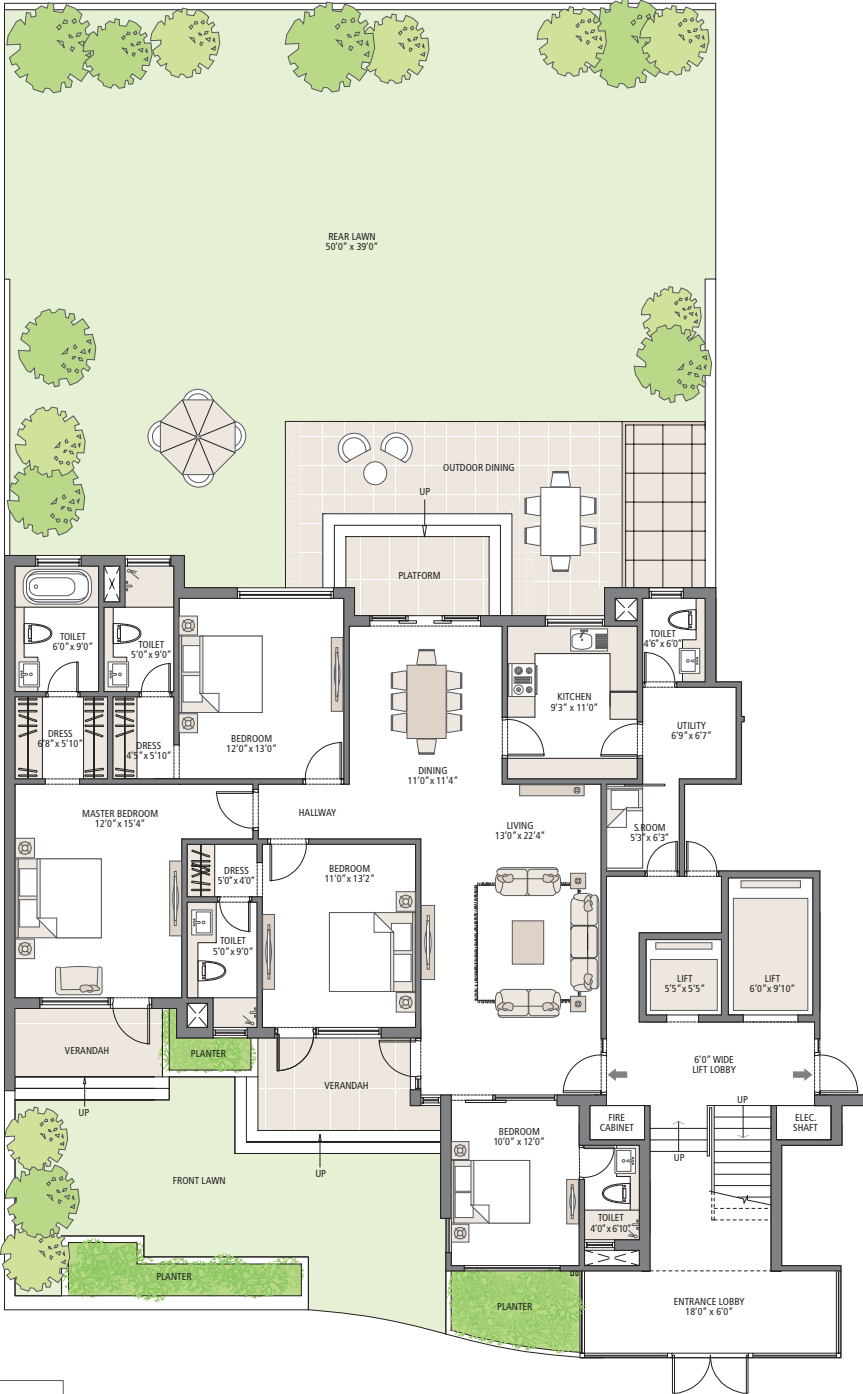
# Floor Plan

## GROUND FLOOR PLAN

Tower 5 to 12

Size: 2410 sq. ft. (224 sq. mtr.)

4 Bedroom, 4 Bathroom, Utility, S.Room, Front & Rear Lawn and Elevators



In the interest of maintaining high standards, all floor plans, layout plans, areas, dimensions and specifications mentioned are indicative and are subject to change as decided by the company or by any competent authority. Soft furnishing, cupboards, kitchen cabinets, furniture and gadgets are not part of the offering. 1 sq. mtr. = 1.196 sq. yds. & 1 sq. mtr. = 10.764 sq. ft. All dimensions are from Masonry to Masonry.

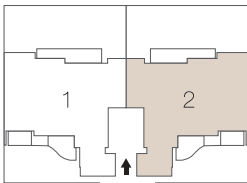
# Floor Plan

## GROUND FLOOR PLAN

Tower 5 to 12

Size: 2410 sq. ft. (224 sq. mtr.)

4 Bedroom, 4 Bathroom, Utility, S.Room, Front & Rear Lawn and Elevators



In the interest of maintaining high standards, all floor plans, layout plans, areas, dimensions and specifications mentioned are indicative and are subject to change as decided by the company or by any competent authority. Soft furnishing, cupboards, kitchen cabinets, furniture and gadgets are not part of the offering. 1 sq. mtr. = 1.196 sq. yds. & 1 sq. mtr. = 10.764 sq. ft. All dimensions are from Masonry to Masonry.

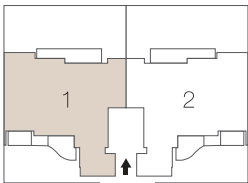
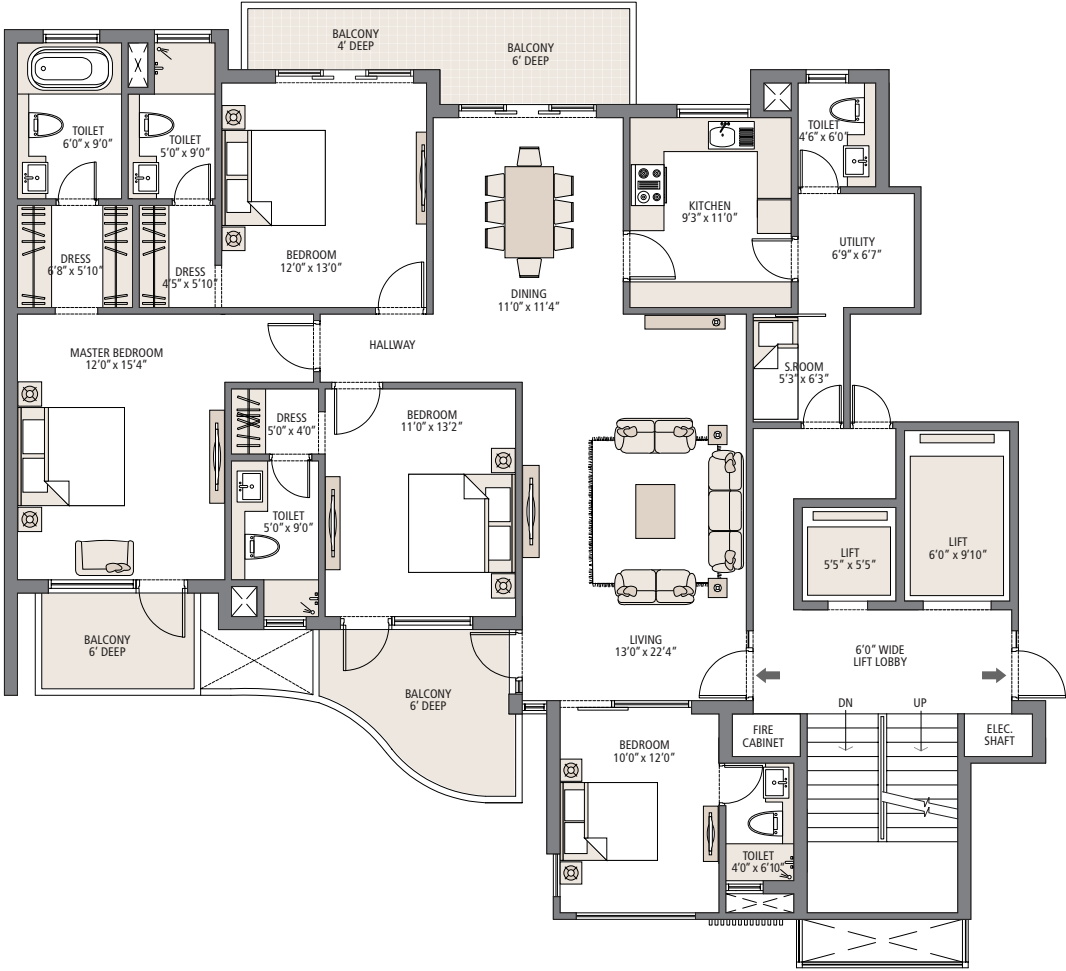
# Floor Plan

## TYPICAL FLOOR PLAN

Tower 1 to 12

Size: 2410 sq. ft. (224 sq. mtr.)

4 Bedroom, 4 Bathroom, Utility, S.Room, Front & Rear Lawn and Elevators



In the interest of maintaining high standards, all floor plans, layout plans, areas, dimensions and specifications mentioned are indicative and are subject to change as decided by the company or by any competent authority. Soft furnishing, cupboards, kitchen cabinets, furniture and gadgets are not part of the offering. 1 sq. mtr. = 1.196 sq. yds. & 1 sq. mtr. = 10.764 sq. ft. All dimensions are from Masonry to Masonry.

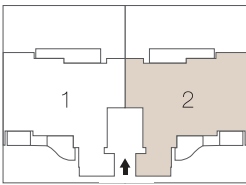
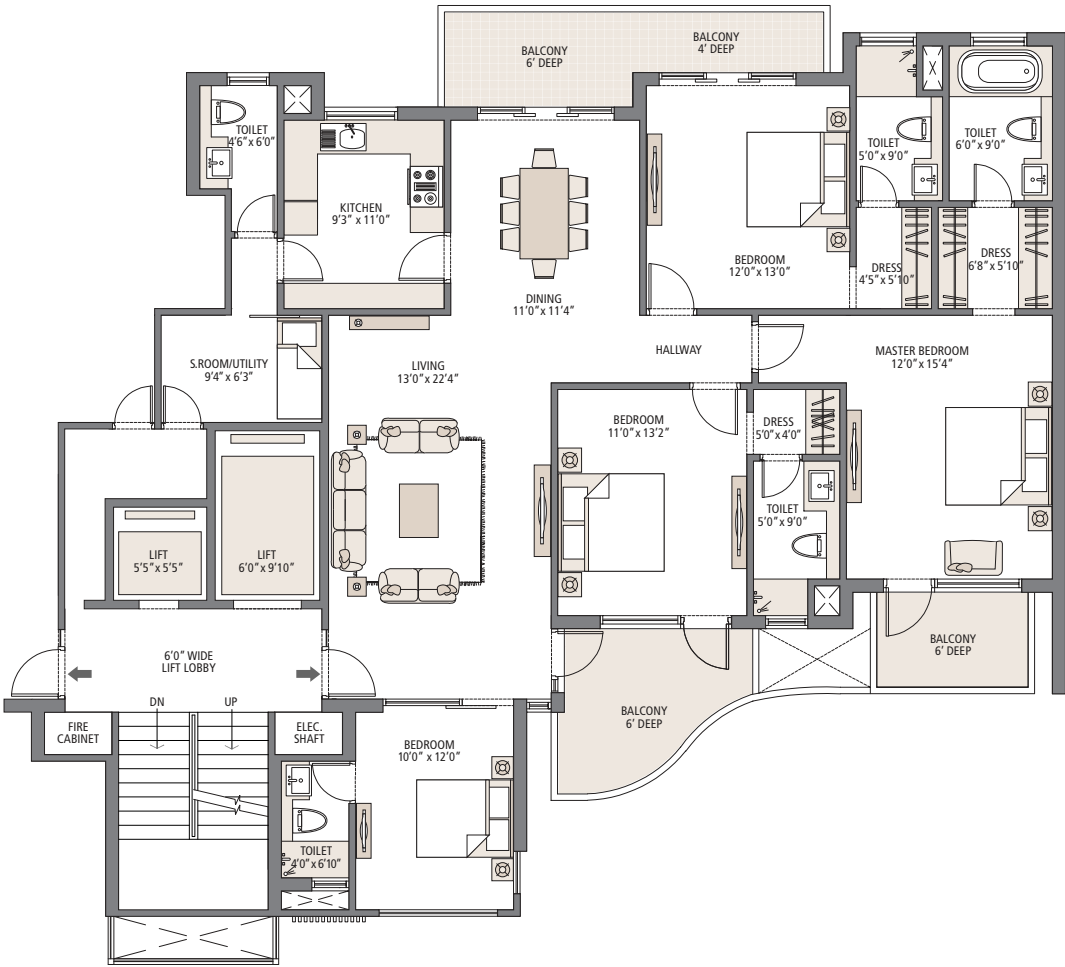
# Floor Plan

## TYPICAL FLOOR PLAN

Tower 1 to 12

Size: 2410 sq. ft. (224 sq. mtr.)

4 Bedroom, 4 Bathroom, Utility, S.Room, Front & Rear Lawn and Elevators



In the interest of maintaining high standards, all floor plans, layout plans, areas, dimensions and specifications mentioned are indicative and are subject to change as decided by the company or by any competent authority. Soft furnishing, cupboards, kitchen cabinets, furniture and gadgets are not part of the offering. 1 sq. mtr. = 1.196 sq. yds. & 1 sq. mtr. = 10.764 sq. ft. All dimensions are from Masonry to Masonry.

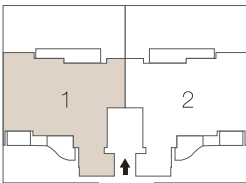
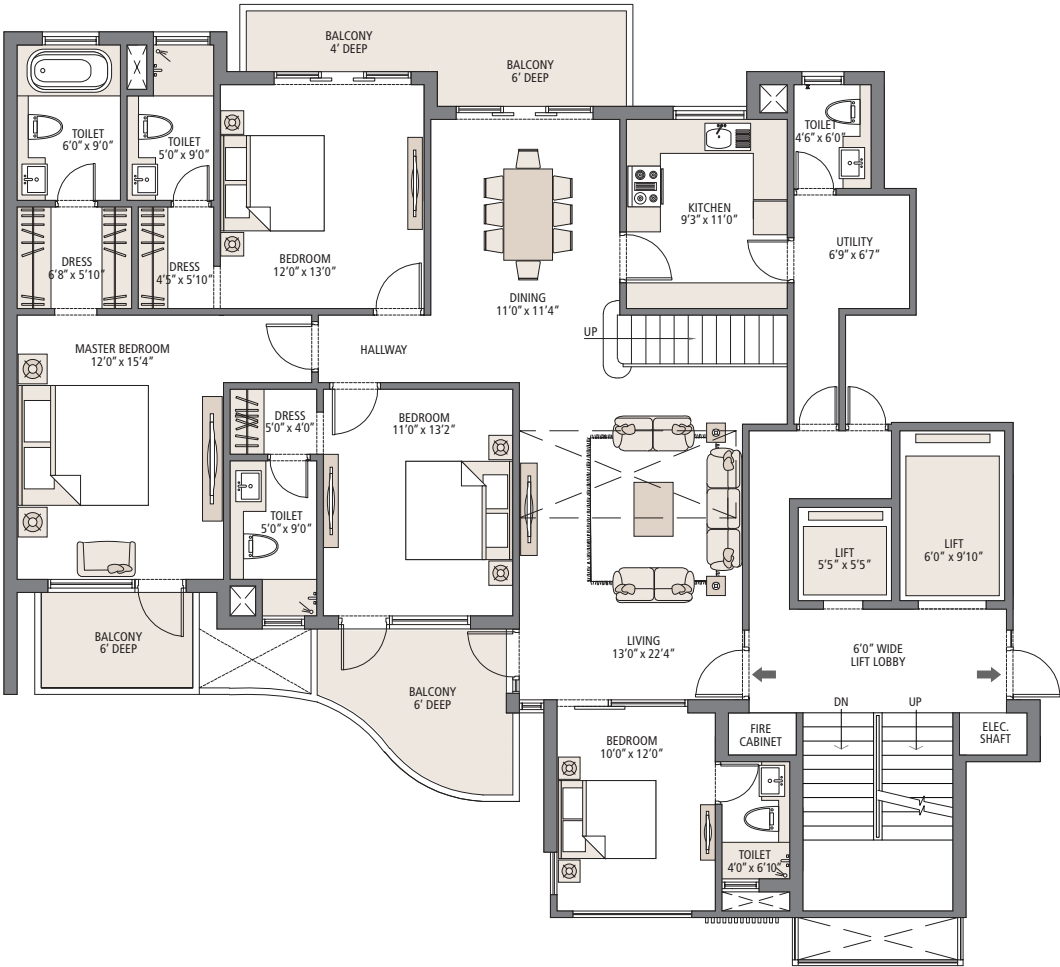
# Floor Plan

## PENTHOUSE 1

Tower 5 to 12

Size: 3670 sq. ft. (341 sq. mtr.)

5 Bedroom, 5 Bathroom, Utility, S.Room, Party Terrace and Elevators



In the interest of maintaining high standards, all floor plans, layout plans, areas, dimensions and specifications mentioned are indicative and are subject to change as decided by the company or by any competent authority. Soft furnishing, cupboards, kitchen cabinets, furniture and gadgets are not part of the offering. 1 sq. mtr. = 1.196 sq. yds. & 1 sq. mtr. = 10.764 sq. ft. All dimensions are from Masonry to Masonry.

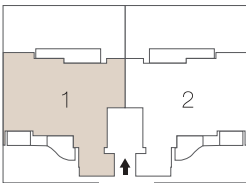
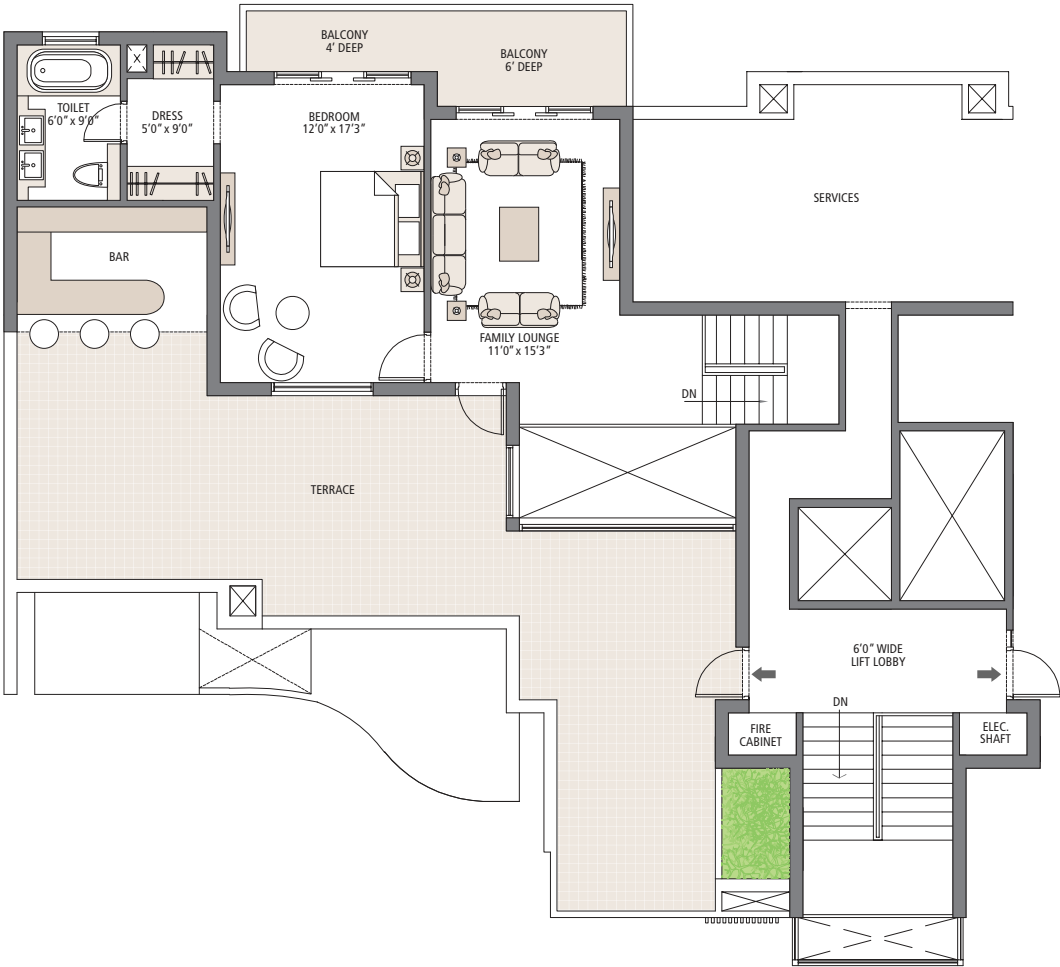
# Floor Plan

## PENTHOUSE 1

Tower 5 to 12

Size: 3670 sq. ft. (341 sq. mtr.)

5 Bedroom, 5 Bathroom, Utility, S.Room, Party Terrace and Elevators



In the interest of maintaining high standards, all floor plans, layout plans, areas, dimensions and specifications mentioned are indicative and are subject to change as decided by the company or by any competent authority. Soft furnishing, cupboards, kitchen cabinets, furniture and gadgets are not part of the offering. 1 sq. mtr. = 1.196 sq. yds. & 1 sq. mtr. = 10.764 sq. ft. All dimensions are from Masonry to Masonry.

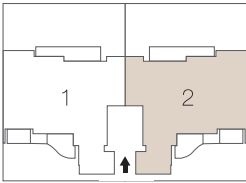
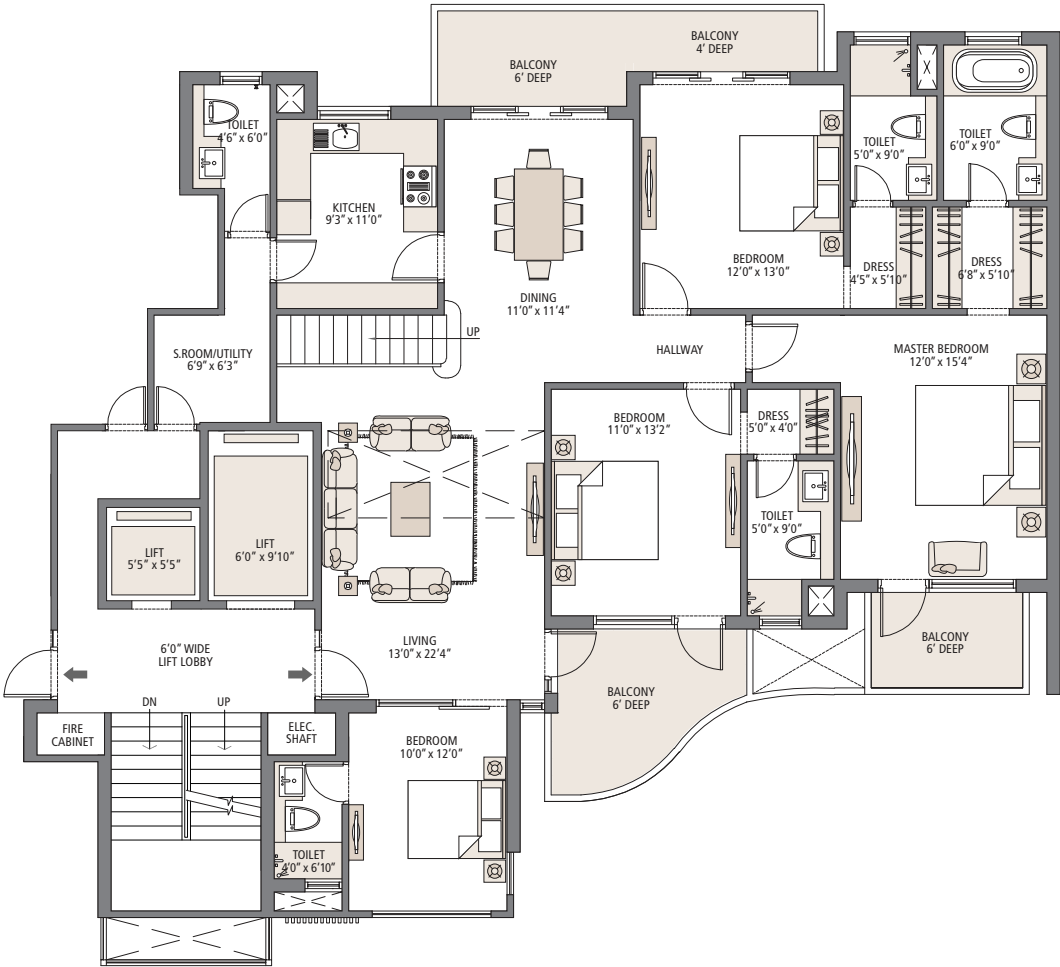
# Floor Plan

## PENTHOUSE 2

Tower 5 to 12

Size: 3670 sq. ft. (341 sq. mtr.)

5 Bedroom, 5 Bathroom, Utility, S.Room, Party Terrace and Elevators



In the interest of maintaining high standards, all floor plans, layout plans, areas, dimensions and specifications mentioned are indicative and are subject to change as decided by the company or by any competent authority. Soft furnishing, cupboards, kitchen cabinets, furniture and gadgets are not part of the offering. 1 sq. mtr. = 1.196 sq. yds. & 1 sq. mtr. = 10.764 sq. ft. All dimensions are from Masonry to Masonry.

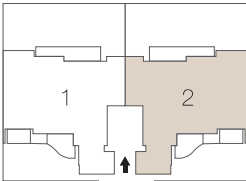
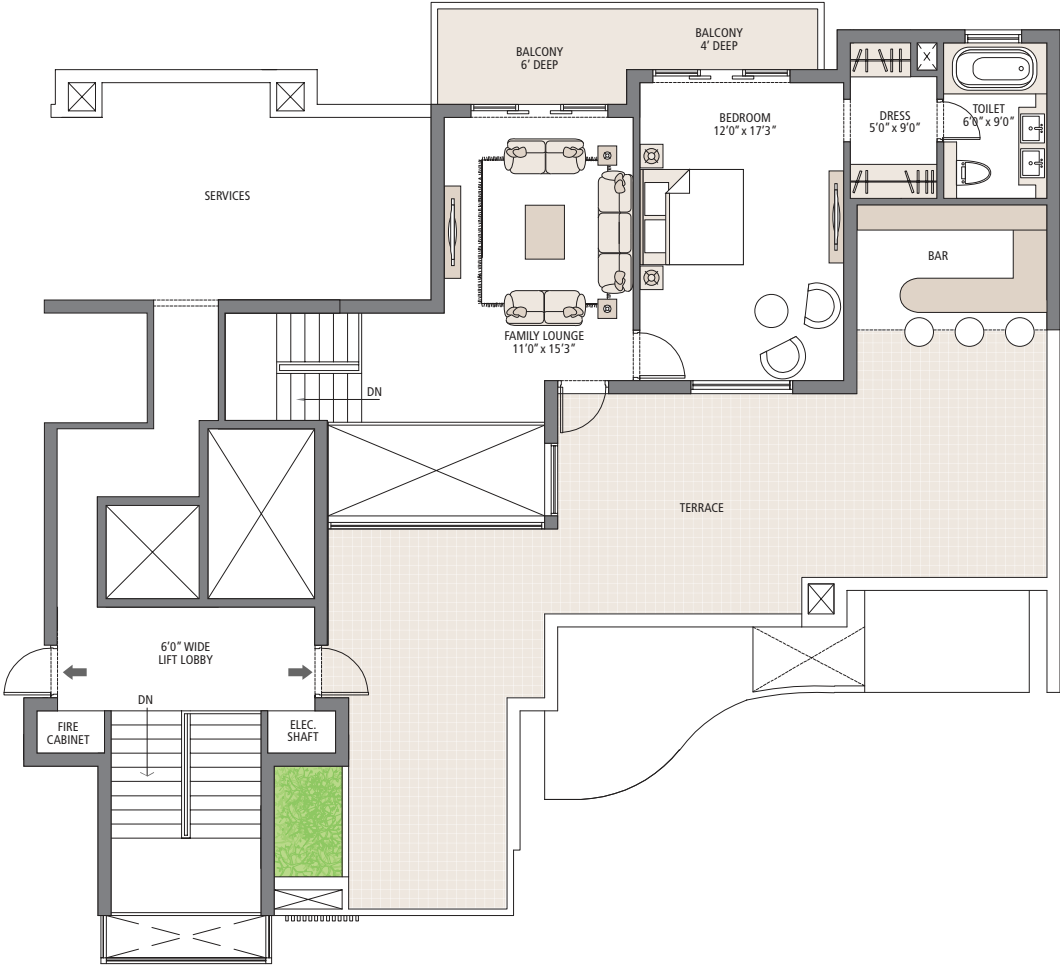
# Floor Plan

## PENTHOUSE 2

Tower 5 to 12

Size: 3670 sq. ft. (341 sq. mtr.)

5 Bedroom, 5 Bathroom, Utility, S.Room, Party Terrace and Elevators



In the interest of maintaining high standards, all floor plans, layout plans, areas, dimensions and specifications mentioned are indicative and are subject to change as decided by the company or by any competent authority. Soft furnishing, cupboards, kitchen cabinets, furniture and gadgets are not part of the offering. 1 sq. mtr. = 1.196 sq. yds. & 1 sq. mtr. = 10.764 sq. ft. All dimensions are from Masonry to Masonry.

# Specification



## Living Room/Dining/Lobby/Family Room

---

- POP punning with acrylic emulsion paint (Walls/Ceiling)
- Imported marble (Floor)
- Internal door: flush door shutters doors
- External door: UPVC/powder coated aluminum doors
- Main entrance door: polished hardwood frame with panelled door shutters
- UPVC/powder coated aluminium window frames and shutters (Windows/Glazing)
- Modular switches

## Master Bedroom

---

- POP punning with acrylic emulsion paint (Walls/Ceiling)
- Wooden laminated (Flooring)
- Internal door: Flush door shutters doors
- External door: UPVC/powder coated aluminum doors
- UPVC/powder coated aluminium window frames and shutters (Windows/Glazing)
- Modular switches

## Master Toilet

---

- Imported marble (Walls/Flooring)
- False ceiling with acrylic emulsion paint (Ceiling)
- Internal door: Flush door shutters
- UPVC/powder coated aluminium window frames and shutters (Windows/Glazing)
- Premium Chinaware, Premium CP Fittings, Marble Counter
- Modular switches

## Other Amenities

---

- Power Back-up
- Sports Facilities with Tennis, Badminton and Basketball Courts
- Tot-Lots, Seesaws, Baby Slides, Sand Pit, Party Area

## Security

---

- Perimeter Security and CCTV in Basement and Main Entrance Lobby for Surveillance

## Kitchen

---

- Ceramic tiles - 2 ft. above counter
- POP punning with acrylic emulsion paint (Walls)
- Vitrified tiles (Flooring)
- POP punning with acrylic emulsion paint (Walls)
- Internal door: Flush door shutters
- External door: UPVC/powder coated aluminum
- Modular switches
- Modular kitchen, granite counter top with back splash in granite, stainless steel sink with double bowl and drainage, CP fittings

## Other Bedroom(s)

---

- POP punning with acrylic emulsion paint (Walls/Ceiling)
- Wooden laminated (Flooring)
- Internal door: Flush door shutters doors
- External door: UPVC/powder coated aluminum doors
- UPVC/powder coated aluminium window frames and shutters (Windows/Glazing)
- Modular switches

## Other Toilets

---

- Ceramic Tiles (Walls)
- Vitrified Tiles (Floor)
- False ceiling with acrylic emulsion paint (Ceiling)
- Internal door: Flush Door Shutters
- UPVC/powder coated aluminium window frames and shutters (Windows/Glazing)
- Premium Chinaware, Premium CP Fittings, Marble Counter
- Modular switches

## Club house

---

- Club with Lounge, Resort style Swimming Pool with Baby Splash, Indoor Heated Pool, Billiards/Pool Room, Health Club Facility with Fully Equipped Unisex Gym Fitted with Cable TV, Jacuzzi, Dance & Aerobics Studio and Multi-Purpose Hall/Function

## Balconies and Terraces

---

- Weather-Proof Paint (Walls/Ceiling)
- Anti-Skid Tiles (Floor)
- External door: UPVC/Powder Coated Aluminum

# Step in to the world of Emaar

Emaar is a pioneer in shaping skylines and lifestyles worldwide, developing vibrant communities that have redefined real estate in 12 countries across the Middle East, Africa, Asia, Europe, USA and Canada. Emaar's iconic projects and scale of operations have made it one of the world's leading real estate companies.

In India, Emaar is committed to creating best in class real estate developments that would set unmatched benchmarks in thoughtful architecture, excellent engineering and impeccable execution.

Step in to experience the grandeur!





[emaar-india.com](http://emaar-india.com)