

ALPHA[̄]CORP

Alphacorp Development Private Limited
602, 6th Floor, Tower – J, World Trade Centre, Ring Road,
Nauroji Nagar, New Delhi – 110029

+91 9555 280 280 | www.alphacorp.in

Disclaimer: Licence No.: 12 of 2018 dated 09.02.2018 granted for developing a group housing residential Apartments situated in Sector-15, Part-2, Gurugram;
RERA Reg. No. 62 of 2024 (RC/REP/HARERA/GGM/835/567/2024/62 dated 13.06.2024).
The information in the brochure is intended to furnish reader(s) with general information on the matters they may find to be of interest. While making all reasonable efforts to provide correct information, Alpha Corp Development Private Limited cannot and does not warrant or guarantee that the data provided by this brochure is accurate in every respect and assumes no responsibility for the accuracy of the information contained on. This brochure does not constitute an offer and/or acceptance and/or contract and/or agreement and/or transaction and/or any intention thereof and/or a disclosure under any statute of any nature whatsoever. The reader is encouraged to seek professional advice and confirm any information contained from or through this brochure from their independent sources and review all information regarding the advertised project in the market. Decisions based on information contained in this brochure are the sole responsibility of the user, and in no event shall the Company/ Firm, their promoters, partners/ directors, employees and agents be liable to the visitor/reader for any or all damages, losses and causes of action (including but not limited to negligence), errors, injury, whether direct, indirect, consequential or incidental, suffered or incurred by any person/s or due to any use and/or inability to use this brochure or information, action taken or abstained through this brochure. The pictures shown in the brochure are only for representation purposes, the design would change in future whenever elevation gets finalised as per the recommendation of architect or site conditions. The layout plan, the orientation of buildings/towers/wings/structures, the common areas, facilities and amenities, the fixtures, fittings, soft furnishing/furniture, gadgets, technology, information, pictures, images and visuals, drawings, specifications, sketches and other details herein are merely a creative imagination and an Architect's impression and are only indicative in nature. The developer at its own discretion, reserves the right to change any or all the features in the interest of the development, as permissible under law without prior intimation to the user. Alpha Corp Development Private Limited does not recommend or endorse any specific bank, procedures, products, opinions, or other information that may be mentioned in the brochure.

HRERA REGN. NO. 62 OF 2024
RC/REP/HARERA/GGM/835/567/2024/62 DATED 13.06.2024
LICENSE NO. 12 OF 2018
WWW.HARYANARERA.GOV.IN

ALPHA[̄]CORP SKY 1

An Iconic Address.
Because you deserve
nothing less.



Presenting

ALPHACORP
SKY1
— ABOVE ALL —

Luxury high-rise apartments reserved
for the discerning elite.

Meticulously crafted for the discerning few, **Alphacorp Sky1** brings you an experience that comes with unparalleled sophistication and finesse. Designed to rise 27 storeys into Gurugram's skyline, these luxury high-rise apartments, with an iconic presence at Sector 15, are a departure from the mundane. With breathtaking views and one-of-a-kind amenities, here are homes that aren't built, but curated for you. Because they are for connoisseurs like you.

NOV
2003

COMPANY
FORMATION

MAY
2004

LAUNCHED FIRST
RESIDENTIAL
CONDOMINIUM
PROJECT

DEC
2005

LAUNCHED FIRST
INTEGRATED
TOWNSHIP PROJECT
OF OVER 300 ACRES

JULY
2006

PE INVESTMENT BY
MORGAN STANLEY
WORTH \$65
MILLION

SEP
2007

DELIVERED FIRST
COMMERCIAL OFFICE
SPACE PROJECT AHEAD
OF SCHEDULE

OCT
2007

\$70 MILLION INVESTMENT
BY A VENTURE CAPITALIST
FUND & ACQUISITION OF
AN INDIAN COMPANY AT
\$140 MILLION

MAR
2010

OPENED FIRST
LARGE FORMAT
MALL OF OVER
7 LACS SQ. FT.
AREA

SEP
2014

LAUNCHED FIRST
INDUSTRIAL
TOWNSHIP PROJECT
OF OVER 147 ACRES

NOV
2015

INVESTMENT BY
BLACKSTONE

DEC
2017

HANDOVER OF
MEERUTONE

OCT
2017

PROJECT COMPLETION
& HANDOVER OF
GURGAONONE 84

MAY
2021

DEAL OF STRESSED
RESIDENTIAL PROJECT
SPIREWOOD IN GURUGRAM

JUNE
2021

ONE-OF-ITS-KIND
ACQUISITION UNDER IBC
PROCESS - 1 RESIDENTIAL
2 COMMERCIAL PROJECTS

Raising the Bar yet again, with Alphacorp Sky1.

Since its inception, Alphacorp has crafted a legacy of excellence through landmark projects, spanning integrated townships, luxurious condominiums, corporate hubs, bustling retail centers, and expansive industrial parks across the National Capital Region (NCR), Punjab, Uttar Pradesh, and Gujarat. Guided by its unwavering motto, 'Raise the Bar', Alphacorp has consistently set new benchmarks as a beacon of professionalism and ethical development.

Projects, including GurgaonOne in Sector 22, GurgaonOne in Sector 84, and Alpha International City in Karnal, stand as a testimony to the group's commitment to excel. Through its dedication to industry-leading practices, Alphacorp has carved out a distinct identity in a crowded marketplace. The group's reputation is founded on core values, a customer-centric approach, transparent processes, and steadfast accountability. With Alphacorp Sky1, this legacy is poised to redefine Gurugram's skyline, embodying our unwavering commitment.

RESIDENTIAL

- GurgaonOne, Sector 22
- GurgaonOne, Sector 84
- MeerutOne, Modipuram
- Alpha International City, Karnal
- Alpha International City, Fatehabad
- Alpha International City, Amritsar

COMMERICAL

- Golf View Corporate Towers, Gurugram
- AlphaOne, Amritsar
- AlphaOne, Ahmedabad

INDUSTRIAL

- Model Industrial Park, Amritsar



Artistic Impression

Luxury residences that let you connect with life



An apartment that understands the luxury of time and space.

Time is an invaluable luxury, bestowed upon a discerning few. At Alphacorp Sky1, this narrative unfolds uniquely for this towering edifice is crafted around the very essence of time and space. We contend that your moments are better spent savouring the finer nuances of life. Time spent soaking in the azure blue sky and its myriad hues. Time spent letting the breeze caress you. Time spent over stories and stargazing. Because here you come to realise that life is worth taking a pause. Albeit, in its most refined and luxurious form.



Artistic Impression

Open-to-sky infinity pool with breathtaking vistas



Because the tranquil embrace of the pool shouldn't be lost to the cacophony of transit.

Modern life is both a treasure and travesty, where time often bears the brunt. We believe life's too precious to squander to the chaos of mundane commutes. That's why at Sky1, every necessity beckons merely a stone's throw away; the airport a mere 15-minute drive, Google India's office a brief 10-minute dash, Cyber Hub and Cyber City a brisk 10-minute travel. The Metro, just a hop away, and NH 48 merely a minute's fleeting journey. After all the pool will always score over the traffic, any day, any time of the year.



Artistic Impression

15,000 sq. ft. Clubhouse, a dedicated wellness space for you



Because life should be savoured
and treasured like a rare vintage.

At Alphacorp, we understand connoisseurs and the fine taste that graces their distinguished reputations. It is this understanding that has inspired the creation of Sky1 - an oasis where refinement meets opulence. Here within our Clubhouse, socializing transcends mere interaction, ascending to lofty heights of sophistication and camaraderie. Indulge your senses in the most exquisite experiences, where every moment is a symphony of luxury and indulgence. Unwind and escape the ordinary as you immerse yourself in a lifestyle that is nothing short of gold-class.



Artistic Impression

Thoughtfully designed three-side-open apartments with great views



Three-side-open apartments open for life.

It is the delicate touch of finesse and sophistication that sets Alphacorp Sky1 apart, but what transcends it from the mundane, is the thoughtfulness that has gone into curating this elite masterpiece. Each unit here has been meticulously designed and lavished with space as its fulcrum of design. Here, opulence meets practicality as the three-side-open structure ensures an abundance of sunlight and gentle breezes caress every corner, enveloping its residents in a perpetual embrace of natural beauty.



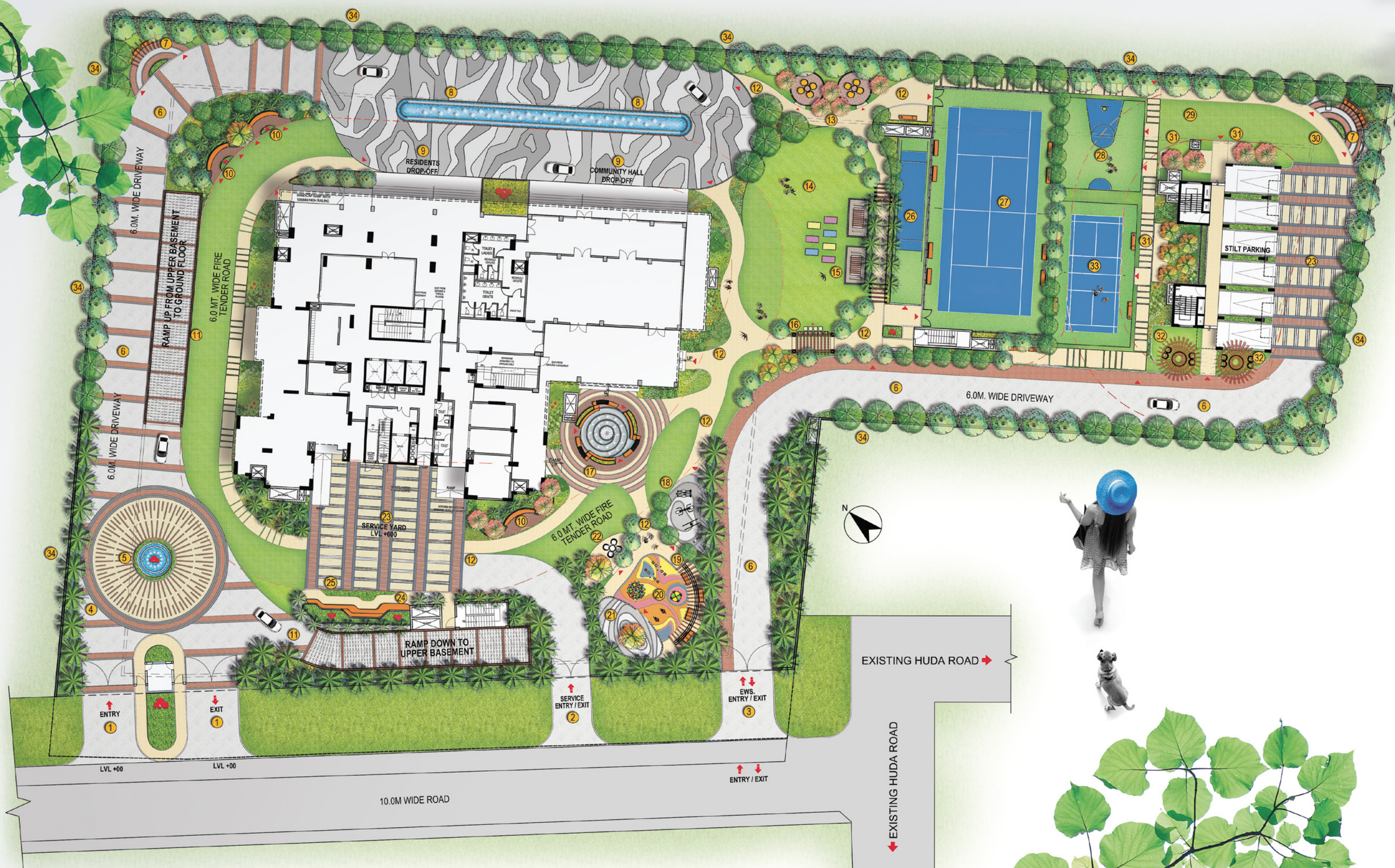
Artistic Impression

Vertical greens, tree-lined pathways and landscaped gardens



Gardens on the ground, gardens in the sky.

Alphacorp takes its sustainability promise very seriously. At Alphacorp Sky1, this commitment ascends to new heights as verdant vertical gardens gracefully soar 95.5 meters into the city's skyline. This specially curated lush foliage ensures the project a year-long green embrace, not only cooling the surroundings but also significantly reducing the carbon footprint. With sprawling vistas and gardens adorning a significant portion of its acreage, Alphacorp Sky1 offers its residents an additional layer of privacy and tranquility. Here, sustainability isn't just a promise; it's a way of life where nature, serenity and well-being share a loving embrace.



Site plan

LEGEND:

- 01 ENTRY/EXIT MAIN GATE COMPLEX
- 02 SERVICE ENTRY/EXIT
- 03 STILT PARKING ENTRY/EXIT
- 04 ACCENT PAVING AROUND ROTARY
- 05 ENTRANCE WATER FEATURE
- 06 6.0M WIDE DRIVEWAY
- 07 SEATING UNDER TRELLIS
- 08 WATER FEATURE WITH BUBBLERS IN DROP-OFF AREAS
- 09 DROP-OFF ACCENT PAVING
- 10 CURVILINEAR SIT-OUT AREAS
- 11 RAMP COVERING
- 12 CURVILINEAR PATHWAY
- 13 SEATING UNDER GAZEBO (2 NOS.)
- 14 PARTY LAWN
- 15 YOGA/MEDITATION GARDEN WITH PAVILIONS (2 NOS.)
- 16 ENTRY TO PARTY LAWN THROUGH PERGOLA
- 17 INTERACTIVE FOUNTAIN WITH SEATING
- 18 OPEN-AIR GYMNASIUM
- 19 SWING BENCHES UNDER TRELLIS
- 20 KIDS' PLAY AREA
- 21 SKATING RINK
- 22 SEATING UNDER PERGOLA
- 23 ACCENT PAVING IN SERVICE YARD & STILT PARKING DRIVEWAY
- 24 FEATURE SEATING
- 25 REFLEXOLOGY PATH
- 26 CRICKET NET PRACTICE
- 27 TENNIS COURT
- 28 HALF BASKETBALL COURT
- 29 PET LAWN
- 30 SIT-OUT AREA FOR PET OWNERS
- 31 OUTDOOR SIT-OUT AREAS
- 32 SEATING UNDER TREE ARBORS
- 33 BADMINTON COURT
- 34 BOUNDARY PLANTATION

Located in the heart of Gurugram city.

Alphacorp Sky1 redefines residential living with unmatched sophistication. Nestled in one-of-the-prime locations, Alphacorp Sky1 is just moments away from NH 48, 32nd Avenue, Google Headquarters, and an array of amenities, including schools, hospitals, shopping malls, corporate offices, and metro stations. Everything you desire, right at your fingertips. Connect with the city and the lifestyle you've been dreaming of, only at Alphacorp Sky1.

EFFORTLESSLY REACH KEY DESTINATIONS WITHIN A RADIUS OF 5-20 MINUTES

OFFICES

DLF CYBERHUB
GOOGLE INDIA HEADQUARTER
SEC.32 INDUSTRIAL AREA
UDYOG VIHAR

SCHOOL & COLLEGES

MDI GURGAON
RYAN INTERNATIONAL SCHOOL
SALWAN PUBLIC SCHOOL
K.R. MANGALAM GLOBAL SCHOOL
MANAV RACHNA INTERNATIONAL SCHOOL
D.A.V. PUBLIC SCHOOL
D.P.S INTERNATIONAL SCHOOL
GD GOENKA SCHOOL

SHOPPING, DINING & ENTERTAINMENT HUBS

32ND AVENUE
HUDA MARKET SEC.14 -15
STAR MALL
MGF METROPOLITAN MALL
GALLERIA MARKET
AMBIENCE MALL
DLF CYBERHUB
HUDA MARKET SECTOR 29

HEALTHCARE & HOSPITALS

MEDANTA HOSPITAL
SHEETLA HOSPITAL
KALYANI HOSPITAL
FORTIS HOSPITAL
MAX HEALTHCARE
EYE-Q SUPER SPECIALITY EYE HOSPITAL
MAYOM HOSPITAL
LOTUS HOSPITAL
CLOUDNINE HOSPITAL

HOTELS & CLUBS

COUNTRY INN & SUITES
RAMADA
TAJ CITY CENTER
CROWNE PLAZA
THE WESTIN
THE LEELA
JUKASO IT SUITES
LEMON TREE PREMIER
THE PLLAZIO HOTEL
PARK PLAZA
BEST WESTERN SKY CITY HOTELT





Artistic Impression

A location that is second to none



A location to fall in love with.

Rarely does one come to experience a setting as enchanting as Alphacorp Sky1. Situated barely a whisper away from the iconic 32nd Avenue, Alphacorp Sky1 places you right at the heart of the vibrant pulse of the city. Barely a saunter away from renowned signature restaurants and premier shopping destinations, this address encapsulates all the allure of a perfect locale. Here you are close enough to feel the city's vibrant energy, yet far enough to savour tranquility. Prestigious schools and world-class healthcare facilities are within easy reach, offering convenience and peace of mind. Upon entering the gates of this refined sanctuary, you are embraced by a world imbued with elegance and sophistication an euphoric rendezvous with sheer class and timeless charm.



Artistic Impression

Celebrate togetherness everyday



27 storeys in the sky and a lifetime of memories to treasure by.

Alphacorp Sky1 is an experience that gently grows on you. Imagine every dawn whispering its magical charm, imagine the sky play out its myriad hues with every changing season. Being the only 27 storey in the vicinity, this haven of elegance and tranquility brings you a stand-alone experience that lingers on with undisturbed views. Think of it as sophistication of the highest order, played out in a symphony so pristine that it makes every moment of life not just special but truly amazing.



Artistic Impression

A well-appointed business lounge



There's life.
Then, there's the business of life.

At Alphacorp Sky1, everything is curated around the life-first philosophy. However, we understand that the business of life is equally important. We believe that pauses should be long, slow, and undisturbed, allowing you to savour each moment like the finest Chardonnay. Yet, when business calls, our plush business center is at your disposal. This elegant rendezvous sets the perfect tone for all your professional endeavors. Here, your work and leisure blend seamlessly, offering a sophisticated environment that caters to both your personal and professional engagements with unparalleled grace.



Artistic Impression

Wide-open spaces curated for fine living



A high-rise, exclusively crafted for the chosen few.

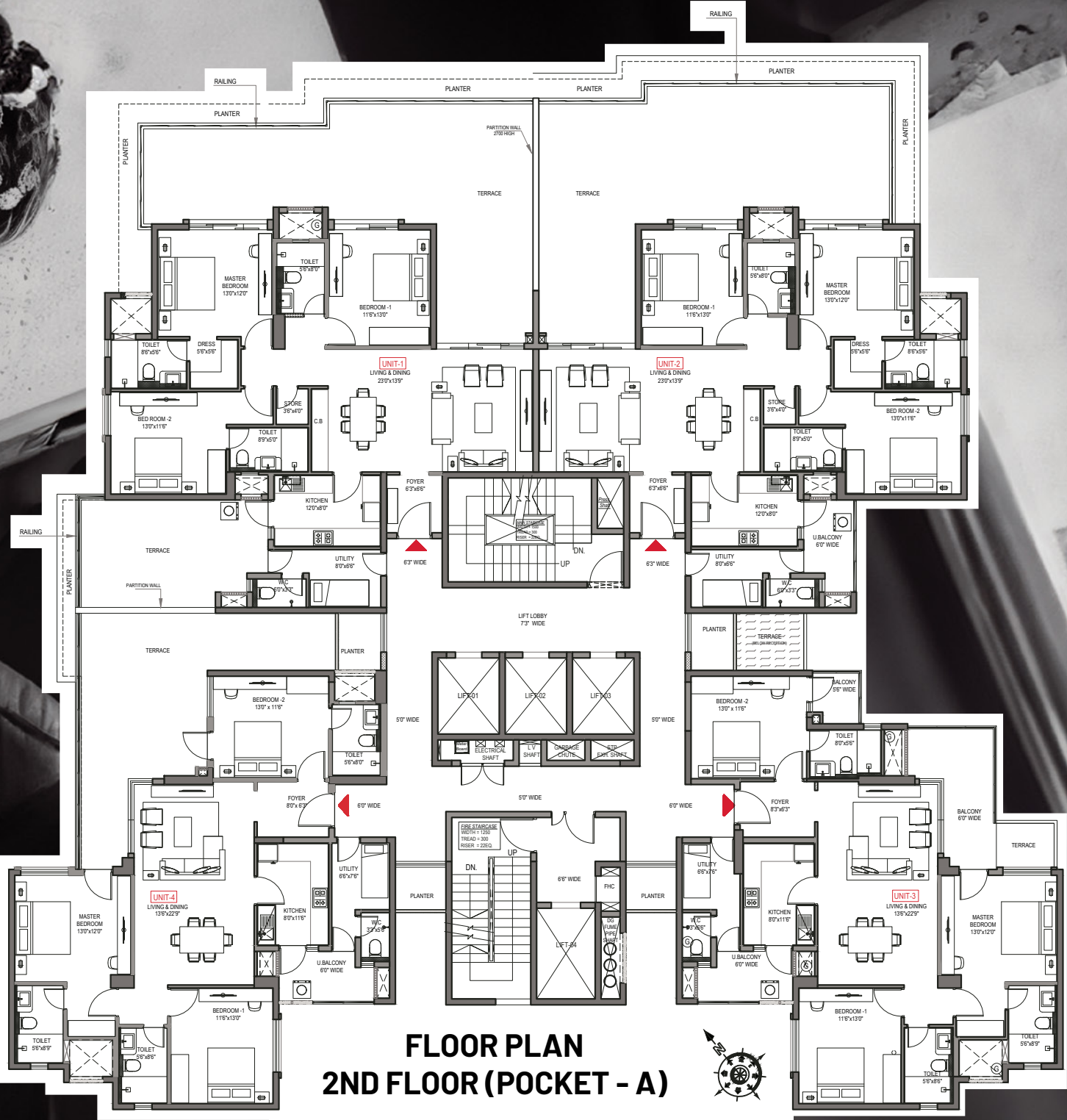
Alphacorp Sky1 is a project meticulously curated around the essence of exclusivity. An exquisite amalgam of finesse, sophistication, and refinement, this opulent edifice makes a bold statement through its exclusive offering. Crafted as a low-density commune, Alphacorp Sky1 celebrates the expansive spaces that it lavishes its residents with. Here, you will never find crowded pools, wait for your turn at the billiards table, or queue at the Clubhouse. Your strolls amidst the verdant stretches of greenery will be as private and serene as you desire. Crafted especially for discerning individuals such as yourself.



Schedule of finishes

SPACE	FLOOR/SKIRTING	WALLS	CEILING	INTERNAL DOOR	EXTERNAL DOORS/WINDOW	ELCTRICAL FITTINGS	WALLS
LIVING/DINING/FOYER/ FAMILY LOUNGE	MARBLE/GRANITE/TILE	LOW VOC PAINT	LOW VOC PAINT	FLUSH DOOR WITH HARD WOOD FRAME	ALUMINIUM/UPVC	MODULAR SWITCHES AND SOCKETS	NO WARDROBES
MASTER BEDROOM	LAMINATED WOODEN FLOORING/TILE	LOW VOC PAINT	LOW VOC PAINT	FLUSH DOOR WITH HARD WOOD FRAME	ALUMINIUM/UPVC	MODULAR SWITCHES AND SOCKETS	NO WARDROBES
MASTER TOILET	VITRIFIED TILES	TILES/LOW VOC PAINT	FALSE CEILING WITH LOW VOC PAINT/GRID CEILING	FLUSH DOOR WITH HARD WOOD FRAME	ALUMINIUM/UPVC	MODULAR SWITCHES AND SOCKETS	BASIN COUNTER WITH MARBLE/GRANITE TOP. WASHBASIN WITH WC SEAT OF KOHLER, JAQUAR/HINDWARE OR EQUIVALENT. CP FITTINGS OF KOHLER/JAQUAR OR EQUIVALENT
BEDROOMS 01, 02 & DOMESTIC SERVANT ROOM (FROM 14TH FLOOR)	LAMINATED WOODEN FLOORING/TILE	LOW VOC PAINT	LOW VOC PAINT	FLUSH DOOR WITH HARD WOOD FRAME	ALUMINIUM/UPVC	MODULAR SWITCHES AND SOCKETS	NO WARDROBES
TOILETS 01, 02 & DOMESTIC SERVANT TOILET (FROM 14TH FLOOR)	VITRIFIED TILES	TILES/LOW VOC PAINT	FALSE CEILING WITH LOW VOC PAINT/GRID CEILING	FLUSH DOOR WITH HARD WOOD FRAME	ALUMINIUM/UPVC	MODULAR SWITCHES AND SOCKETS	BASIN COUNTER WITH MARBLE/GRANITE TOP. WASHBASIN WITH WC SEAT OF KOHLER, JAQUAR/HINDWARE OR EQUIVALENT. CP FITTINGS OF KOHLER/JAQUAR OR EQUIVALENT
KITCHEN	VITRIFIED TILES	VITRIFIED TILES TILL 2 FEET ABOVE COUNTER/LOW VOC PAINT	LOW VOC PAINT	FLUSH DOOR WITH HARD WOOD FRAME	ALUMINIUM/UPVC	MODULAR SWITCHES AND SOCKETS	COUNTER WITH MARBLE/GRANITE TOP. CP FITTINGS KOHLER/JAQUAR OR EQUIVALENT. STAINLESS STEEL SINGLE BOWL SINK WITH DRAIN BOARD (OVER HEAD AND UNDER COUTER CABINATES, HOB, CHIMNEY, RO SHALL NOT BE PROVIDED)
BALCONIES	ANTI SKID TILES	WEATHER RESISTANT TEXTURE PAINT	WEATHER RESISTANT TEXTURE PAINT	NA	NA	MODULAR SWITCHES AND SOCKETS	GLASS/MS RAILING
UTILITY ROOM	VITRIFIED/CERAMIC TILES	LOW VOC PAINT	LOW VOC PAINT	FLUSH DOOR WITH HARD WOOD FRAME	ALUMINIUM/UPVC	MODULAR SWITCHES AND SOCKETS	GLASS/MS RAILING
VITRIFIED/CERAMIC TILES	VITRIFIED/CERAMIC TILES	TILES/LOW VOC PAINT	FALSE CEILING WITH LOW VOC PAINT/GRID CEILING	FLUSH DOOR WITH HARD WOOD FRAME	ALUMINIUM/UPVC	MODULAR SWITCHES AND SOCKETS	WALL MOUNTED BASIN OF CERA/HINDWARE OR EQUIVALENT. WC OF CERA, HINDWARE OR EQUIVALENT. CP FITTINGS OF CERA HINDWARE OR EQUIVALENT

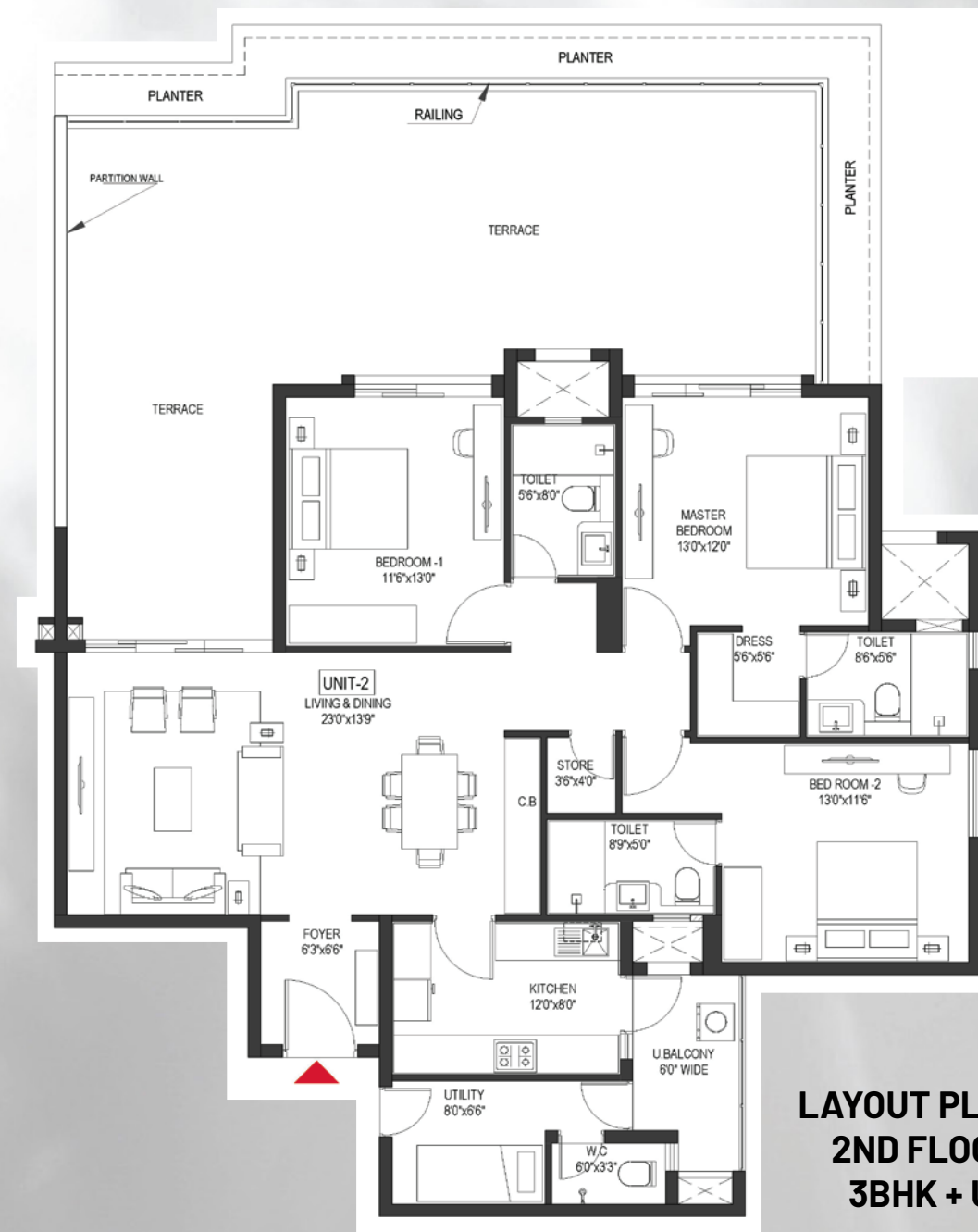
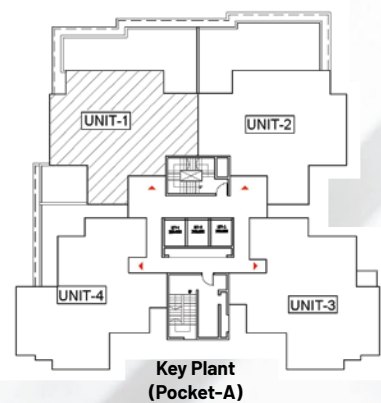
Pick your space.
Pick your floor.





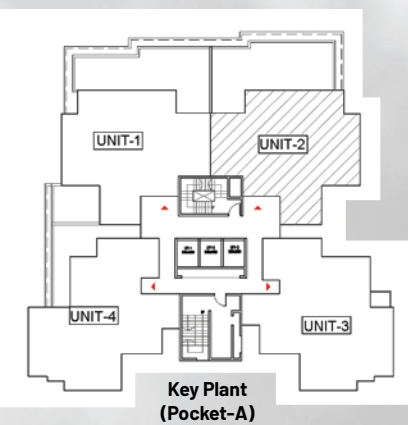
**LAYOUT PLAN UNIT-1
2ND FLOOR PLAN
3BHK + UTILITY**

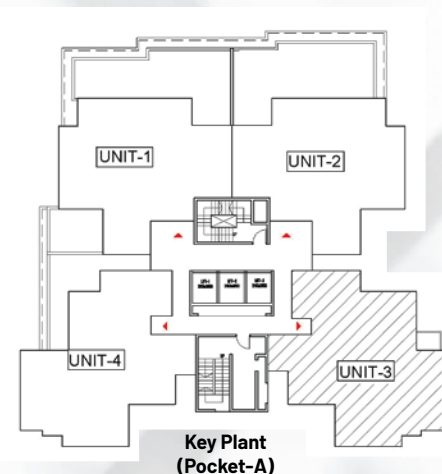
UNIT-1		
CARPET AREA	122.96 SQ.M. (1324 SQ.FT.)	TYPE- 3 BHK + UTILITY
BALCONY AREA	22.37 SQ.M. (241 SQ. FT.)	
SALEABLE AREA	335 SQ.M. (3605 SQ.FT.)	



**LAYOUT PLAN UNIT-2
2ND FLOOR PLAN
3BHK + UTILITY**

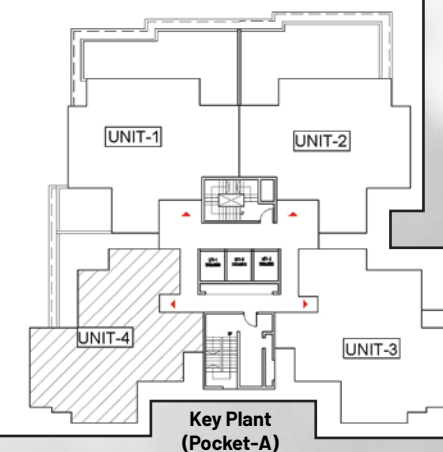
UNIT-2		
CARPET AREA	122.96 SQ.M. (1324 SQ.FT.)	TYPE- 3 BHK + UTILITY
BALCONY AREA	22.37 SQ.M. (241 SQ. FT.)	
SALEABLE AREA	301 SQ.M. (3235 SQ.FT.)	





**LAYOUT PLAN UNIT-3
2ND FLOOR PLAN
3BHK + UTILITY**

UNIT-3		
CARPET AREA	112.38 SQ.M. (1210 SQ.FT.)	TYPE- 3 BHK + UTILITY
BALCONY AREA	19.38 SQ.M. (209 SQ. FT.)	
SALEABLE AREA	216 SQ.M. (2320 SQ.FT.)	



**LAYOUT PLAN UNIT-4
2ND FLOOR PLAN
3BHK + UTILITY**

UNIT-4		
CARPET AREA	112.08 SQ.M. (1206 SQ.FT.)	TYPE- 3 BHK + UTILITY
BALCONY AREA	18.86 SQ.M. (203 SQ. FT.)	
SALEABLE AREA	210 SQ.M. (2261 SQ.FT.)	

Your Life.
Your Space.





LAYOUT PLAN UNIT-1
3RD FLOOR PLAN
3BHK + UTILITY

UNIT-1		
CARPET AREA	122.96 SQ.M. (1324 SQ.FT.)	TYPE- 3 BHK + UTILITY
BALCONY AREA	22.37 SQ.M. (241 SQ.FT.)	
SALEABLE AREA	245 SQ.M. (2634 SQ.FT.)	



LAYOUT PLAN UNIT-2
3RD FLOOR PLAN
3BHK + UTILITY

UNIT-2		
CARPET AREA	122.96 SQ.M. (1324 SQ.FT.)	TYPE- 3 BHK + UTILITY
BALCONY AREA	22.37 SQ.M. (241 SQ.FT.)	
SALEABLE AREA	229 SQ.M. (2462 SQ.FT.)	



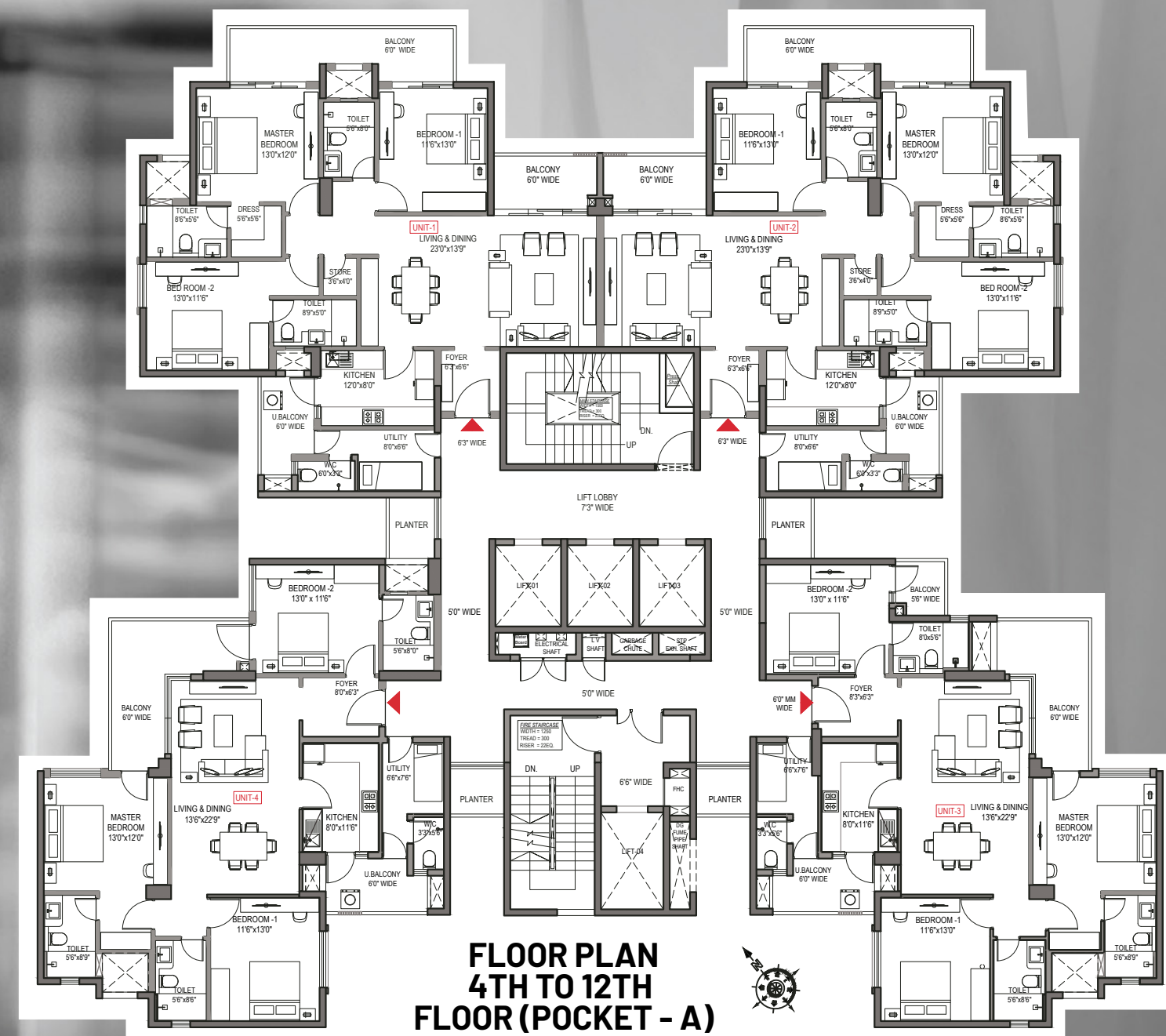
**LAYOUT PLAN UNIT-3
3RD FLOOR PLAN
3BHK + UTILITY**

UNIT-3		
CARPET AREA	112.38 SQ.M.(1210 SQ.FT.)	TYPE- 3 BHK + UTILITY
BALCONY AREA	19.38 SQ.M. (209 SQ.FT.)	
SALEABLE AREA	211 SQ.M. (2268 SQ.FT.)	



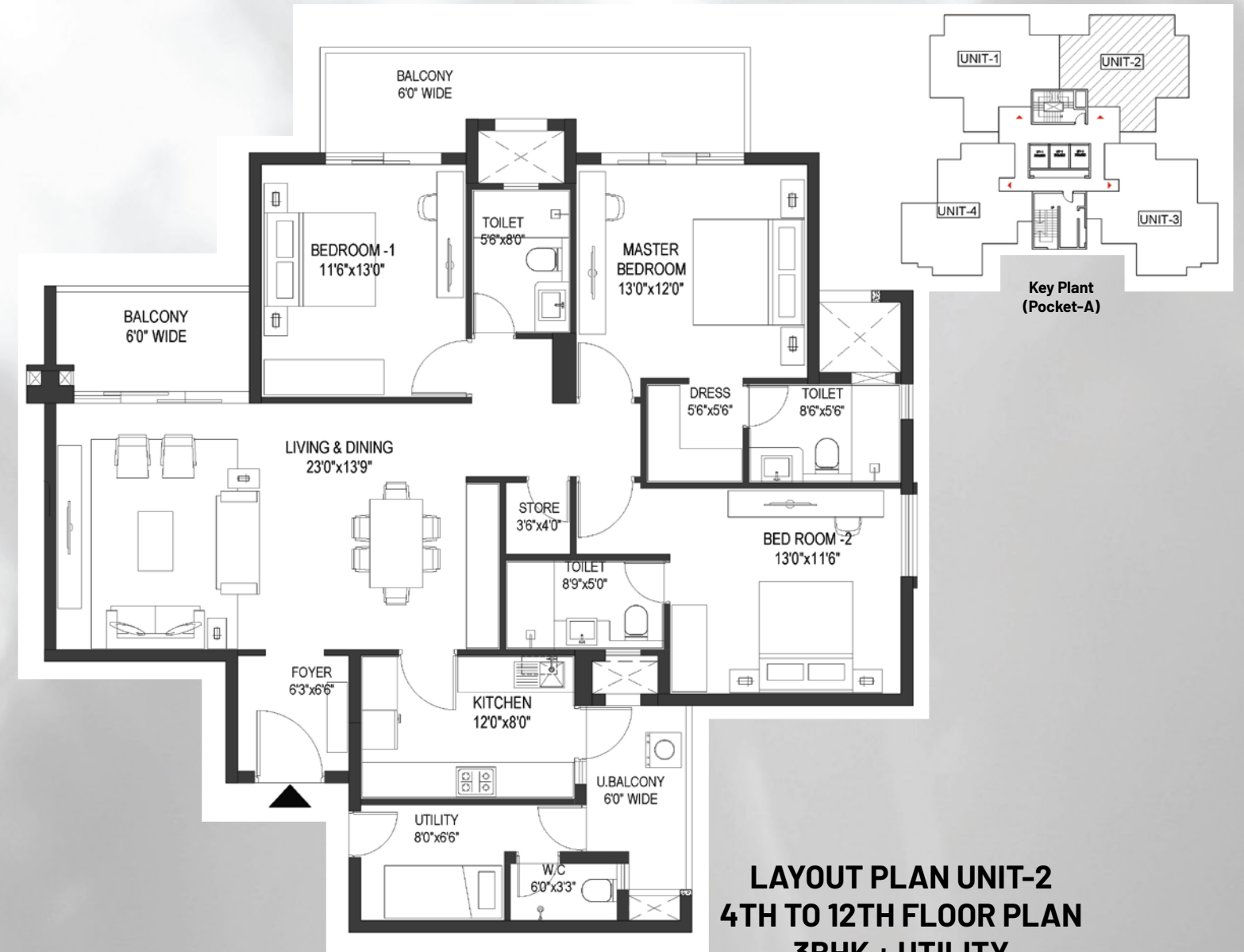
**LAYOUT PLAN UNIT-4
3RD FLOOR PLAN
3BHK + UTILITY**

UNIT-4		
CARPET AREA	112.08 SQ.M. (1206 SQ.M.)	TYPE- 3 BHK + UTILITY
BALCONY AREA	18.86 SQ.M. (203 SQ.FT.)	
SALEABLE AREA	210 SQ.M. (2261 SQ.FT.)	

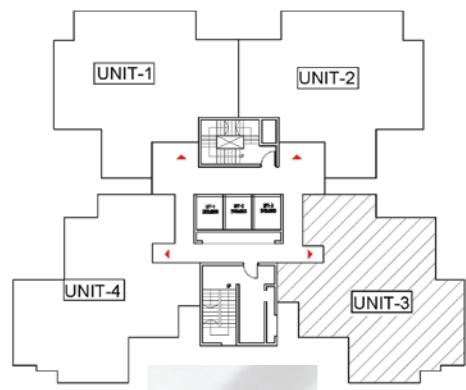




UNIT-1		
CARPET AREA	122.18 SQ.M. (1315 SQ.FT.)	TYPE- 3 BHK + UTILITY
BALCONY AREA	23.19 SQ.M. (250 SQ.FT)	
SALEABLE AREA	245 SQ.M. (2633 SQ.FT.)	



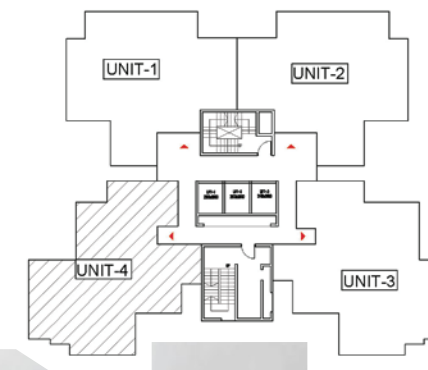
UNIT-2		
CARPET AREA	122.18 SQ.M. (1315 SQ.FT.)	TYPE- 3 BHK + UTILITY
BALCONY AREA	23.19 SQ.M. (250 SQ.FT)	
SALEABLE AREA	229 SQ.M. (2461 SQ.FT.)	



Key Plant
(Pocket-A)

LAYOUT PLAN UNIT-3
4TH TO 12TH FLOOR PLAN
3BHK + UTILITY

UNIT-3		
CARPET AREA	112.38 SQ.M. (1210 SQ.FT.)	TYPE- 3 BHK + UTILITY
BALCONY AREA	19.38 SQ.M. (209 SQ.FT.)	
SALEABLE AREA	211 S.M. (2268 SQ.FT)	



Key Plant
(Pocket-A)

LAYOUT PLAN UNIT-4
4TH TO 12TH FLOOR PLAN
3BHK + UTILITY

UNIT-4		
CARPET AREA	112.08 SQ.M. (1206 SQ.FT.)	TYPE- 3 BHK + UTILITY
BALCONY AREA	18.86 SQ.M. (203 SQ.FT.)	
SALEABLE AREA	210 SQ.M. (2261 SQ.FT.)	

Your Kingdom.
Your Space.





LAYOUT PLAN UNIT-1
14TH TO 27TH FLOOR PLAN
3BHK + UTILITY

UNIT-1		
CARPET AREA	122.18 SQ.M. (1315 SQ.FT.)	TYPE- 3 BHK + UTILITY
BALCONY AREA	23.19 SQ.M. (250 SQ.M.)	
SALEABLE AREA	241 SQ.M. (2593 SQ.FT.)	



LAYOUT PLAN UNIT-2
14TH TO 27TH FLOOR PLAN
3BHK + UTILITY

UNIT-2		
CARPET AREA	122.18 SQ.M. (1315 SQ.FT.)	TYPE- 3 BHK + UTILITY
BALCONY AREA	23.19 SQ.M. (250 SQ.M.)	
SALEABLE AREA	229 SQ.M. (2461 SQ.FT.)	



LAYOUT PLAN UNIT-3
14TH TO 27TH FLOOR PLAN
3BHK + SERVANT

UNIT-3		
CARPET AREA	122.84 SQ.M.(1322 SQ.FT.)	TYPE- 3 BHK + UTILITY + SERVANT
BALCONY AREA	19.42 SQ.M. (209 SQ.FT.)	
SALEABLE AREA	226 SQ.M. (2432 SQ.FT.)	



LAYOUT PLAN UNIT-4
14TH TO 27TH FLOOR PLAN
3BHK + UTILITY

UNIT-4		
CARPET AREA	112.08 SQ.M. (1206 SQ.FT.)	TYPE- 3 BHK + UTILITY
BALCONY AREA	18.86 SQ.M. (203 SQ.FT)	
SALEABLE AREA	210 SQ.M. (2262 SQ.FT.)	

ALPHA[̄]CORP

ALPHA[̄]CORP
SKY1
— ABOVE ALL —

Sector 15, Part-2, Gurugram

We'd love to tell you more on Alphacorp Sky1 at +91 **72900 00097**
www.alphacorpsky1.in